

Pollen Analysis Report

Sample Report
01/06/2024



Pollen Analysis

Method

Visual analysis was conducted using a light microscope at 400x magnification. No pollen coefficients were applied to the results, so they are not suitable for product quantification.

Plant Family	Genus/Species	Common Name/ Examples	Primary (>50%)	Secondary (10-50%)	Minor (1-10%)	Present (<1%)
Rosaceae	Crateagus	Hawthorn	●			
Aceraceae	Acer pseudoplatanus	Sycamore		●		
Brassicaceae	Brassica	OSR Mustard Cabbage		●		
Grossulariaceae	Ribes sanguineum	Flowering currant			●	
Amaryllidaceae		Onions Snowdrop Daffodil				●
Pinaceae	Pinus	Pine				●
Poaceae		Grass				●
Caprifoliaceae	Symphoricarpos	Snowberry				●

Observations

- This sample appears consistent with UK honey, foraged in late spring (April/May).
- Pine and grass pollens usually occur as a windborne, rather than foraged pollens.



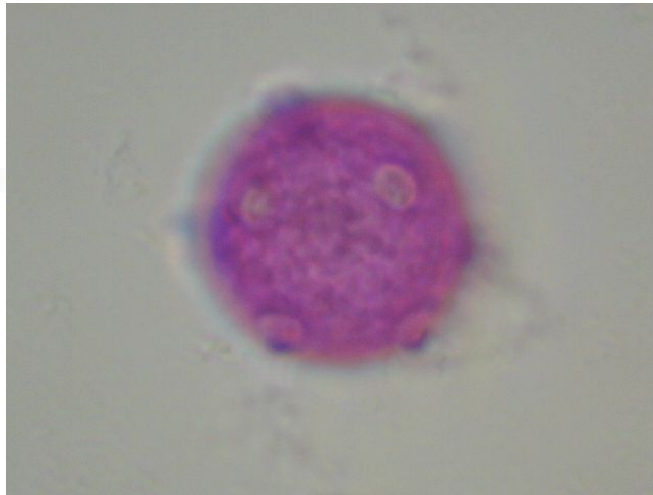
Hawthorn



Sycamore



Snowberry



Flowering Currant



Grass